

Q.1. (A) Choose the correct option and write its alphabet for the following questions. [5]

- i. Glycolysis and _____ are two steps of anaerobic respiration.
- a. Kreb's cycle b. Electron transfer chain reaction
c. Fermentation d. Reduction
- ii. _____ is used in thermal power plant.
- a. Coal b. Uranium
c. Natural gas d. Water
- iii. Chemically, vinegar is 4% _____ .
- a. gluconic acid b. amino acid
c. citric acid d. acetic acid
- iv. Government of India has encouraged the _____ for improving the production by launching NKM-16.
- a. apiculture b. vermiculture
c. pisciculture d. sericulture
- v. Alcohol consumption mainly affects _____ system.
- a. respiratory b. nervous
c. digestive d. circulatory

(B) Answer the following questions. [5]

- i. Write the scientific name of human being.
- ii. Find the odd man out.
Actin, Ossein, Myosin, Aldosterone
- iii. State whether true or false.
The power available from the solar cell is AC.
- iv. I have calcareous spines and I move with tube feet, which phylum do I belong to?
- v. Write any one example of natural disasters.

Q.2. (A) Give scientific reasons. (Any two)

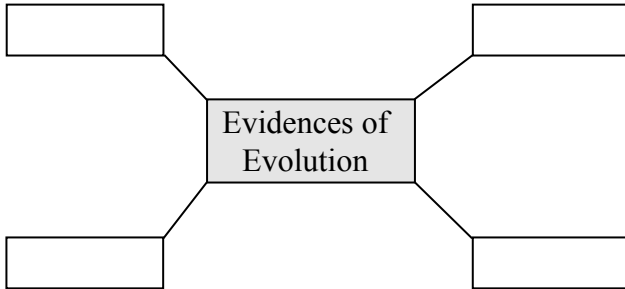
[4]

- i. Water is an essential nutrient.
- ii. Tobacco chewing is injurious to health.
- iii. It is absolutely necessary to control the fission reaction in nuclear power plants.

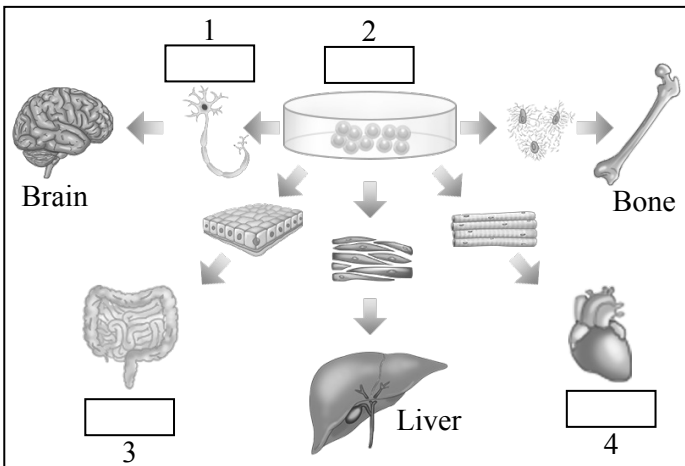
(B) Answer the following questions. (Any three)

[6]

- i. Complete the following chart.



- ii. What is environment? Write two types of environment.
- iii. Observe the given diagram and write proper names in the blocks.



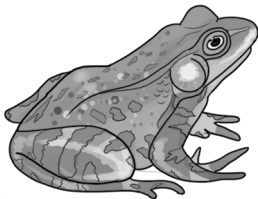
- iv. Which precautions should be followed to maintain the reproductive health?
- v. Distinguish between butterfly and bat with the help of two distinguishing characteristics.

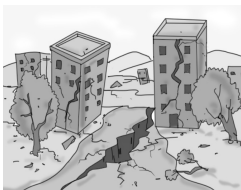

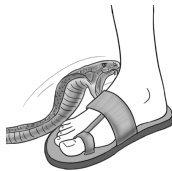
Q.3. Solve the following questions. (Any five) [15]

- i. Redraw the table taking into account the relation between entries in the three columns.

Column-I	Column-II	Column-III
Coal	Kinetic energy	Nuclear power plant
Uranium	Thermal energy	Wind electricity plant
Wind	Nuclear energy	Thermal plant

- ii.



- a. Identify the class of the animals shown in the figure.
- b. Write two characteristics of that class.
- iii. Which precautions are necessary for proper decomposition of domestic waste?
- iv. Write the importance of medicinal plants.
- v. What will you do? Why?
- a. You are spending more time on Internet/mobile games, phone, etc.
- b. You have to use free space around your house for good purpose.
- c. Your brother studying in Std. XII has developed stress.
- vi. The following are some pictures of disasters. Which precautions would you take during these disasters?
- a. 
- b. 
- c. 
- vii. Explain the concept of connecting links with two examples.

- viii. 1. Write two sources of lipids.
2. How much energy is obtained from lipids?
3. What is produced after digestion of lipids?

Q.4. Solve the following questions. (Any one)

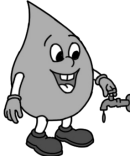
[5]

- i. Draw a neat and labelled diagram of female reproductive system and give the functions of:
a. Oviduct b. Ovary c. Uterus
- ii. Explain the meanings of the following symbols.

(A)



(B)



(C)



(D)



(E)



★★★